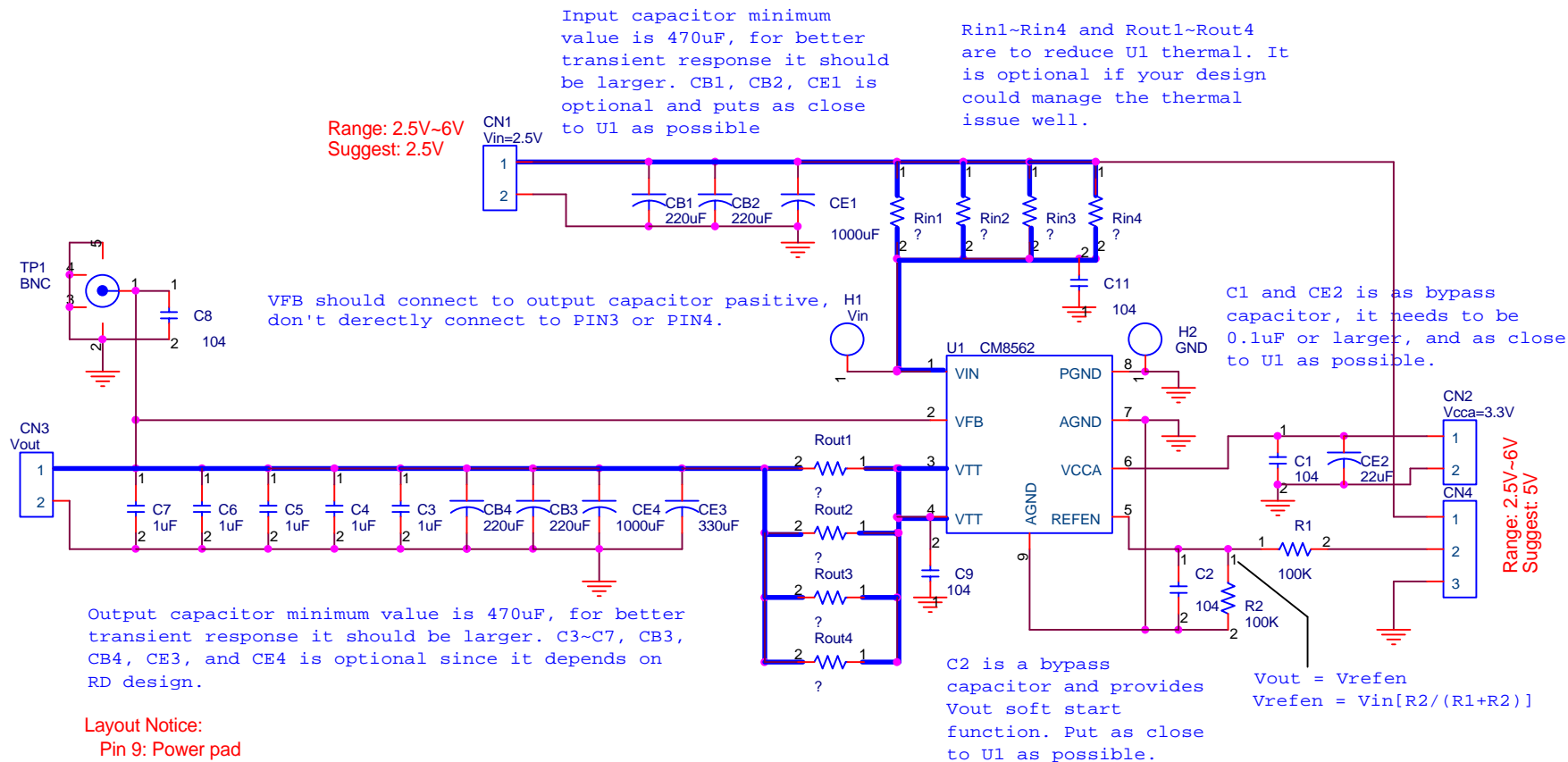
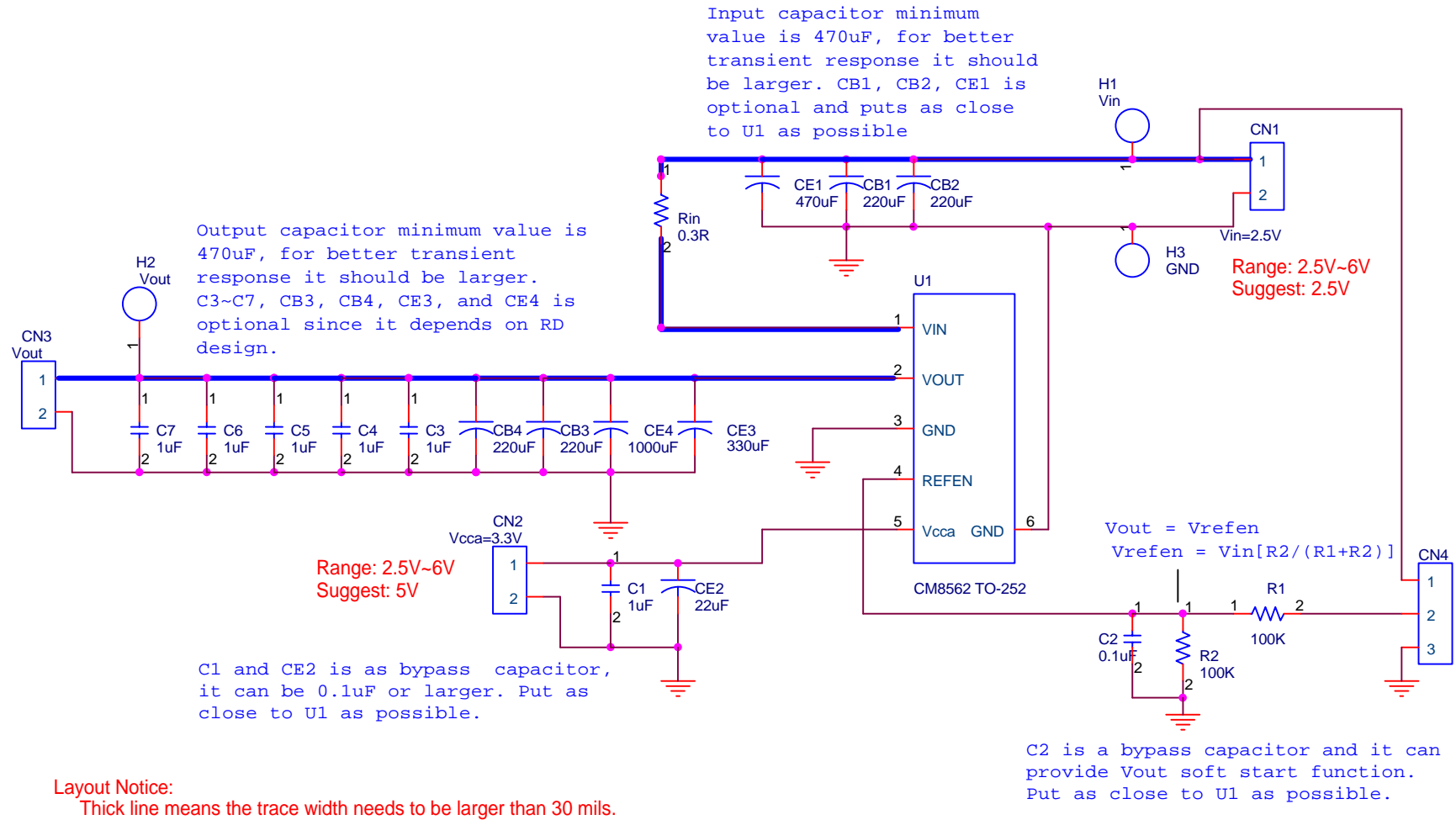


### APPLICATION CIRCUIT



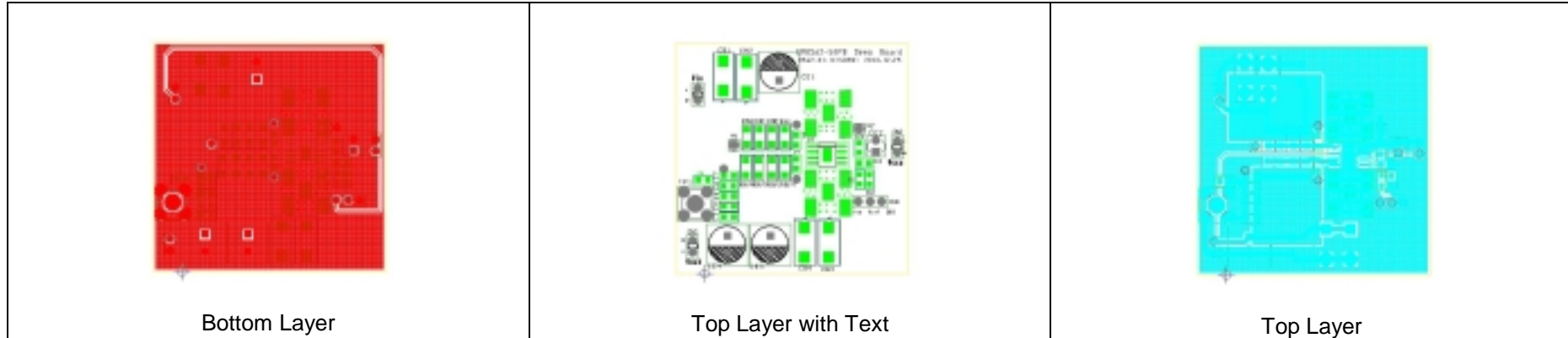
**(Schematic of CM8562-SOP8)**



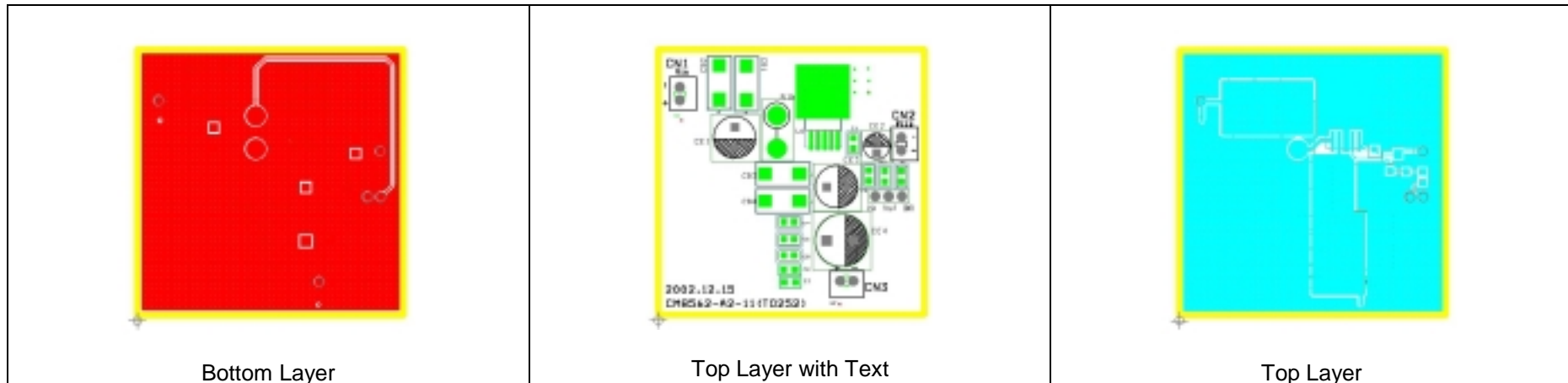
**(Schematic of CM8562-TO252)**

## DEMO BOARD

### CM8562-SOP8

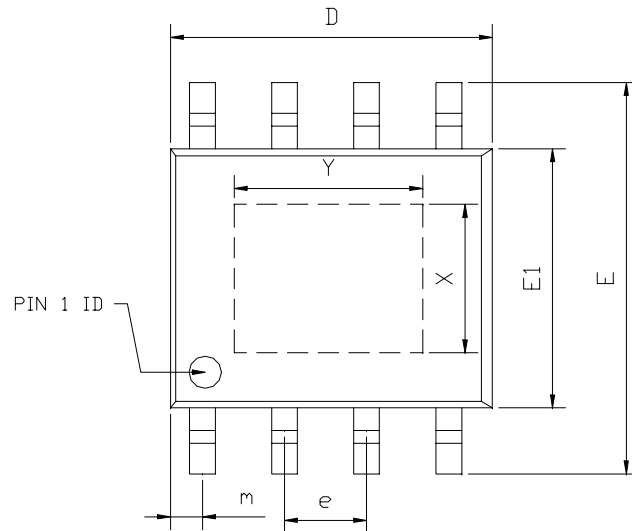


### CM8562-TO252



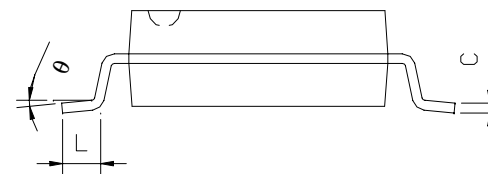
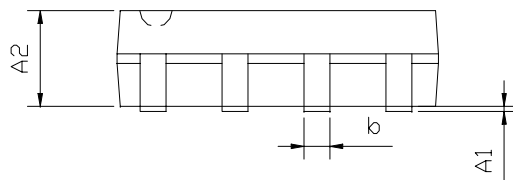
## PACKAGE DIMENSION

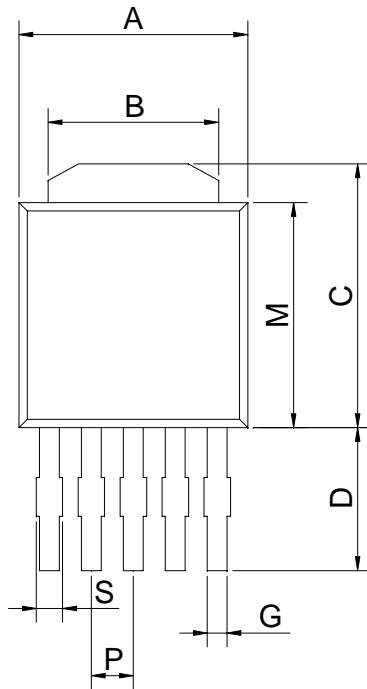
### 8-Pin SOP w/ Power Pad (PS08)



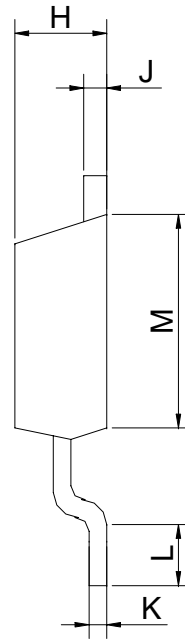
SYMBOLS	DIMENSIONS IN MILLIMETERS			DIMENSIONS IN INCHS		
	MIN	NOM	MAX	MIN	NOM	MAX
A1	0.10	---	0.25	0.004	---	0.010
A2	1.40	---	1.55	0.055	---	0.061
b	0.30	---	0.51	0.012	---	0.020
C	0.15	---	0.26	0.006	---	0.010
D	4.60	---	5.06	0.169	---	0.199
E	5.79	---	6.20	0.228	---	0.244
E1	3.76	---	4.01	0.148	---	0.158
e	---	1.27	---	---	0.050	---
L	0.38	---	0.69	0.015	---	0.035
m	0.43	---	0.69	0.017	---	0.027
$\theta$	0°	---	8°	0°	---	8°

EXPOSED PAD DIMENSION : (mm)  
PAD SIZE: X=2.34 ; Y=2.92



**PACKAGE DIMENSION**
**5-Lead TO-252 (N252)**


Front View



Side View

SYMBOLS	DIMENSIONS IN MILLIMETERS			DIMENSIONS IN INCHS		
	MIN	NOM	MAX	MIN	NOM	MAX
A	6.40	----	6.80	0.252	----	0.268
B	5.20	----	5.50	0.205	----	0.217
C	6.80	----	7.20	0.268	----	0.283
D	2.20	----	2.80	0.087	----	0.110
G	0.40	----	0.60	0.016	----	0.024
P	1.27REF			0.05REF		
H	2.20	----	2.40	0.087	----	0.094
J	0.45	----	0.55	0.018	----	0.022
K	0.05	----	0.15	0.002	----	0.006
L	0.90	----	1.50	0.035	----	0.059
M	5.40	----	5.80	0.212	----	0.228
S	0.50	----	0.80	0.019	----	0.031